

## Genomics Workshop Wednesday, March 29, 2006

Evanston Northwestern Healthcare Research Institute  
1001 University Place, Conference room 118A-C

8:30 – 9:00

Continental Breakfast, Registration

9:00 – 9:10

Welcome and Introductions

Holly Falk-Krzesinski, Office for Research Development

9:10 – 9:35

Alternative Pre-mRNA Splicing and Human Diseases  
Jane Wu, Center for Genetic Medicine

9:35 – 10:00

Introduction to the Center for Functional Genomics at  
Evanston Northwestern Healthcare Research Institute  
San Ming Wang, ENHRI

10:00 – 10:25

Organizing Biological Knowledge Using Genome  
Sequence  
Rex Chisholm, Center for Genetic Medicine

10:25 – 10:50

The NUgene Project: Feeding the Genetic  
Medicine Pipeline  
Wendy Wolf, Center for Genetic Medicine

10:50 – 11:15

A Two-state Hidden Markov Duration Model for  
Detecting Length Preference of Linker DNA in  
Eukaryotic Cells  
Jiping Wang, Statistics

11:15 – 11:40

Mapping Protein Kinase Networks  
Eric Weiss, Biochemistry, Molecular Biology, & Cell  
Biology

*This workshop is sponsored by the Office for Research  
Development, Northwestern University:*  
<http://www.northwestern.edu/research/offices/ord.html>

11:40 – 11:55

Break for Lunch

11:55 – 12:20

Bioinformatics Activities in the Center for Genetic  
Medicine & The Use of Disease Ontology in Defining  
Clinical Phenotype for Genetic Associations  
Warren Kibbe, Center for Genetic Medicine

12:20 – 12:45

The Genotyping and Microarray Facilities for  
Genomic Research at Northwestern  
Nadereh Jafari-Boroujerdi, Center for Genetic  
Medicine

12:45 – 1:10

Multiple Testing in Microarray Studies  
Hongmei Jiang, Statistics

1:10 – 1:35

Molecular Genetics of Breast Cancer  
Toru Ouchi, ENHRI

1:35 – 1:50

Complex Phenotypes: Hematopoietic  
Differentiation and Function Acquisition  
Terry Papoutsakis, Chemical & Biological  
Engineering

1:50 – 2:15

Results of Genome-Wide Mutagenesis and  
Screening for Vision and Asthma Phenotypes in the  
Mouse  
Larry Pinto, Neurobiology & Physiology

2:15 – 2:40

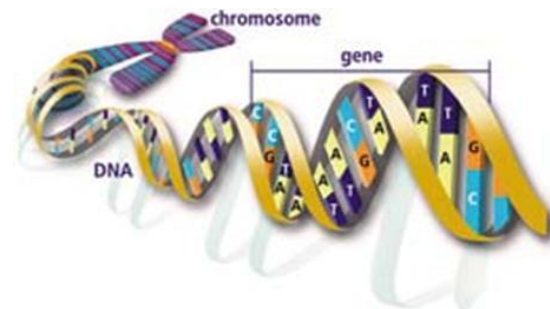
Integrated Approaches to the Analysis of the  
Cancer Genome, Epigenome and Transcriptome  
Marcelo Bentos Soares, Children's Memorial  
Research Center

2:40 – 3:05

Upcoming NIH Opportunities in Genomics  
Holly Falk-Krzesinski

3:05 – 3:30

Discussion and Wrap-up  
All participants



## **Driving Directions to Evanston Northwestern Healthcare Research Institute, 1001 University Place, Evanston, IL**

### **From Northwestern University campus**

- Start out going west on Foster Ave. toward Orrington Ave.
- Turn left onto Maple Ave.

### **To Evanston via Metra commuter railroad**

- Take the Metra Union Pacific North Line toward Kenosha.
- Get off at Davis Street, Evanston.
- Turn right onto Ridge Avenue.
- Make a right on Emerson Street.
- Turn right on Maple Avenue.

### **Via Interstate 88, Interstate 90 or Interstate 190**

(Note: these directions also apply if traveling from O'Hare International Airport)

- Take I-88, I-90 or I-190 eastbound until you reach northbound I-294 (heading toward Wisconsin).
- Take I-294 north to Dempster Street east.
- Follow Dempster Street approximately ten miles through the suburbs of Des Plaines, Park Ridge, Niles, Morton Grove, Skokie and Evanston.
- At McCormick Blvd in Evanston, turn left and go north.
- Turn right onto Golf Road/Elgin Road, Golf Road becomes Emerson Street.
- Turn right onto Maple Avenue.

### **Via Interstate 94, Interstate 90, Interstate 80 or Interstate 57**

- Once you reach the Chicago area, you want to go north on I-94 West (Note: Highway is called I-94 West, but runs north-south in Chicago metro area). If you are coming from:
- I-80/I-94: I-94 splits from I-80 south of Chicago and heads north.
- I-57: I-57 ends at and merges into I-94 on the south side of Chicago.
- I-90: I-90 merges with I-94 on the south side of Chicago.
- Once you are northbound on I-94 W:
- When I-94 splits from I-90, bear to the right, staying on I-94 (Edens Expressway).
- Take I-94 north to Dempster Street east (exit 37B).
- Follow Dempster Street approximately five miles through the suburbs of Skokie and Evanston.
- At McCormick Blvd in Evanston, turn left and go north.
- Turn right onto Golf Road/Elgin Road, Golf Road becomes Emerson Street.
- Turn right onto Maple Avenue.

### **Parking information**

- Parking for Northwestern faculty/staff is available across the street (must have a NU parking permit)
- Parking is also available across the street in the public parking lot for a small fee (first hour is free)